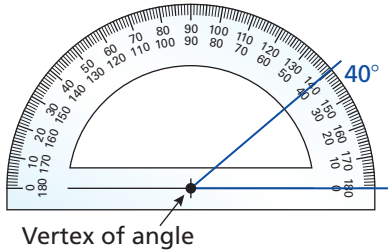


REVIEW: Using a Protractor

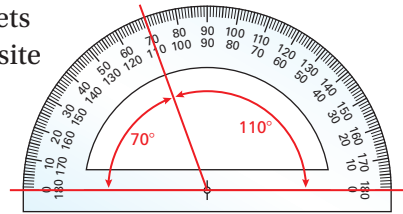
Name _____

Key Concept and Vocabulary



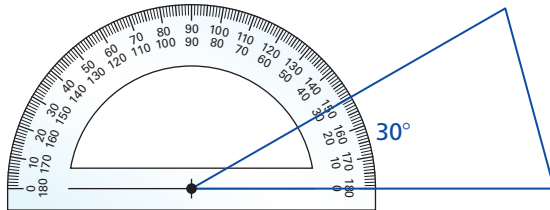
Visual Model

Protractors have 2 sets of numbers in opposite directions. When in doubt as to which to use, think, "Should this angle be greater than or less than 90° ?"



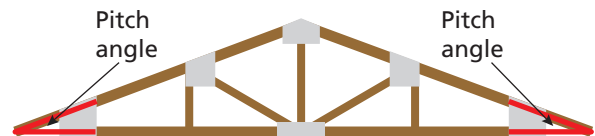
Skill Example

1. Measure an angle of the triangle.



Application Example

2. Measure the pitch angle of the roof.



The angle is about 20° .

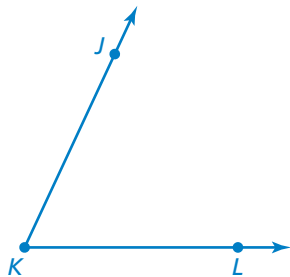
PRACTICE MAKES PURR-FECT®



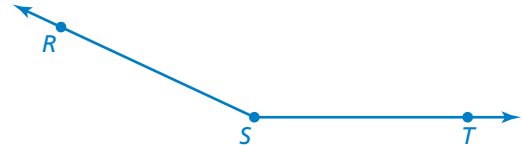
Check your answers at BigIdeasMath.com.

Find the measure of the angle.

3.



4.



Use a protractor to draw the angle.

5. 35°

6. 60°

7. 113°

8. **WINDOW** Measure each angle of the triangle.

A = _____

B = _____

C = _____

