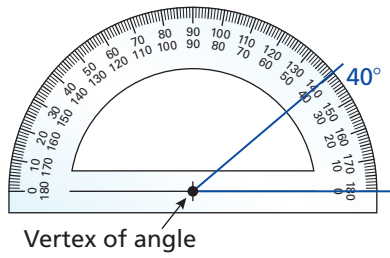


REVIEW: Using a Protractor

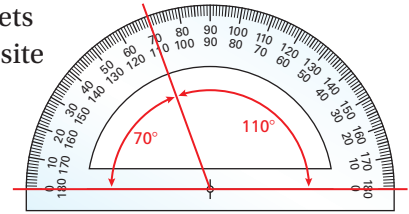
Name _____

Key Concept and Vocabulary



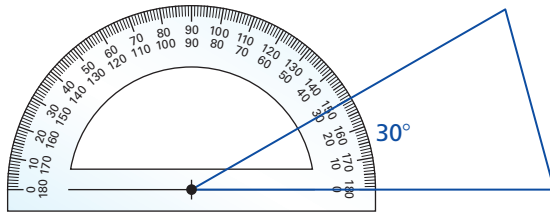
Visual Model

Protractors have 2 sets of numbers in opposite directions. When in doubt as to which to use, think, "Should this angle be greater than or less than 90°?"



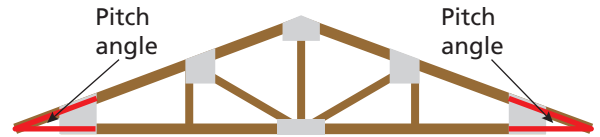
Skill Example

1. Measure an angle of the triangle.



Application Example

2. Measure the pitch angle of the roof.



The angle is about 20°.

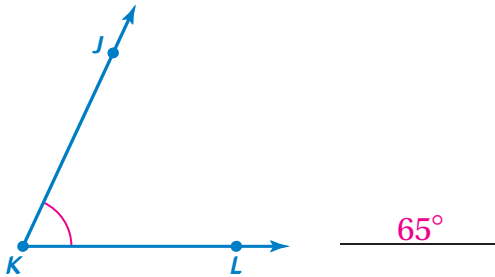
PRACTICE MAKES PURR-FECT®



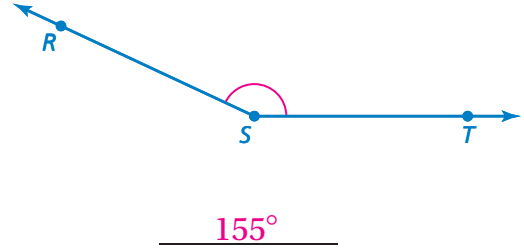
Check your answers at BigIdeasMath.com.

Find the measure of the angle.

3.

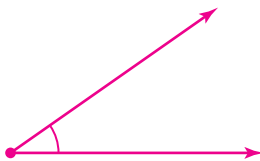


4.

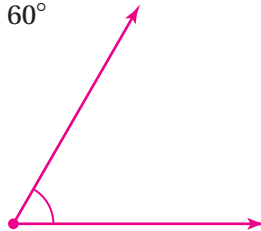


Use a protractor to draw the angle.

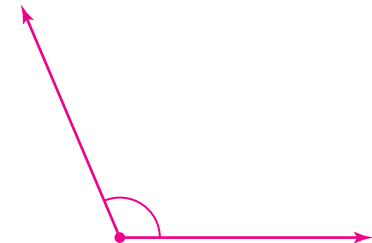
5. 35°



6. 60°



7. 113°



8. **WINDOW** Measure each angle of the triangle.

A = 45°

B = 75°

C = 60°

