

REVIEW: Measuring Elapsed Time

Name _____

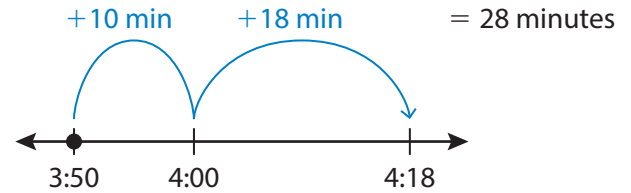
Key Concept and Vocabulary

3:50 P.M. → 4:18 P.M.

Elapsed time: 28 minutes

Elapsed time

Visual Model



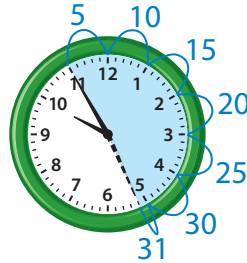
Skill Examples

1. Start: 5:20 P.M.
End: 5:37 P.M.



So, the elapsed time is 17 minutes.

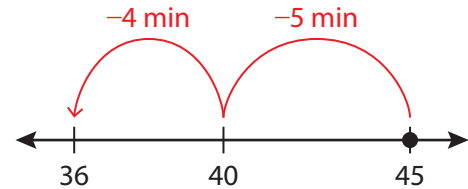
2. Start: 9:55 A.M.
End: 10:26 A.M.



So, the elapsed time is 31 minutes.

Application Example

3. You have 45 minutes before you have to go to bed. You spend 9 minutes getting ready for bed and the rest of the time reading a book. How much time do you spend reading?



You spend 36 minutes reading.

PRACTICE MAKES PURR-FECT®



Check your answers at BigIdeasMath.com.

Find the elapsed time.

4. Start: 7:10 A.M. End: 7:53 A.M. _____
5. Start: 1:35 P.M. End: 1:43 P.M. _____
6. Start: 8:05 P.M. End: 8:29 P.M. _____
7. Start: 10:40 A.M. End: 11:02 A.M. _____
8. Start: 7:25 A.M. End: 8:11 A.M. _____
9. Start: 6:45 P.M. End: 7:39 P.M. _____

Find the end time.

10. Start: 12:30 P.M.
Elapsed time: 19 minutes
End: _____
11. Start: 6:15 A.M.
Elapsed time: 51 minutes
End: _____
12. Start: 2:41 P.M.
Elapsed time: 35 minutes
End: _____
13. **ART CLASS** Art class is 47 minutes long. During class, you spend 28 minutes drawing and the rest of the time painting. How much time do you spend painting? _____
14. **GAMES** You play a board game from 12:20 P.M. to 12:58 P.M. You stop and eat lunch. Then you play a video game from 1:26 P.M. to 2:18 P.M. How long do you play games in all? _____