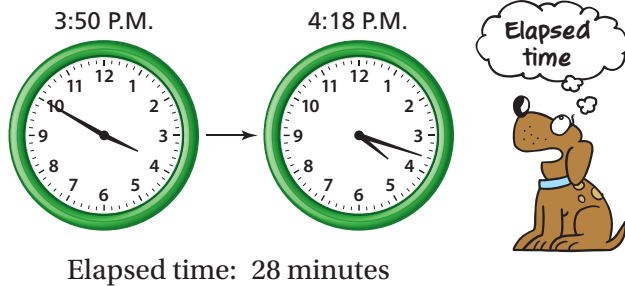


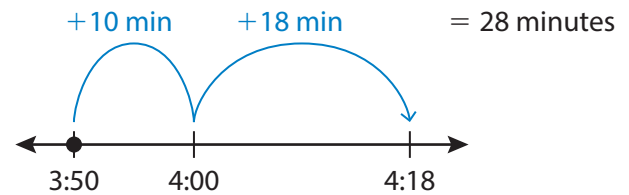
REVIEW: Measuring Elapsed Time

Name _____

Key Concept and Vocabulary



Visual Model



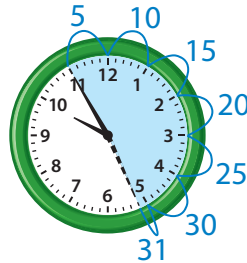
Skill Examples

1. Start: 5:20 P.M.
End: 5:37 P.M.



So, the elapsed time is 17 minutes.

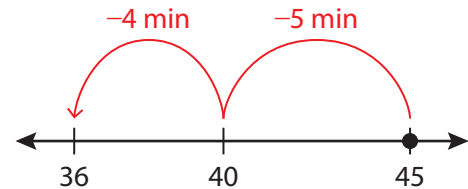
2. Start: 9:55 A.M.
End: 10:26 A.M.



So, the elapsed time is 31 minutes.

Application Example

3. You have 45 minutes before you have to go to bed. You spend 9 minutes getting ready for bed and the rest of the time reading a book. How much time do you spend reading?



You spend 36 minutes reading.

PRACTICE MAKES PURR-FECT®

Check your answers at BigIdeasMath.com.

Find the elapsed time.

4. Start: 7:10 A.M. End: 7:53 A.M. 43 minutes 5. Start: 1:35 P.M. End: 1:43 P.M. 8 minutes
6. Start: 8:05 P.M. End: 8:29 P.M. 24 minutes 7. Start: 10:40 A.M. End: 11:02 A.M. 22 minutes
8. Start: 7:25 A.M. End: 8:11 A.M. 46 minutes 9. Start: 6:45 P.M. End: 7:39 P.M. 54 minutes

Find the end time.

10. Start: 12:30 P.M. Elapsed time: 19 minutes End: 12:49 P.M.
11. Start: 6:15 A.M. Elapsed time: 51 minutes End: 7:06 A.M.
12. Start: 2:41 P.M. Elapsed time: 35 minutes End: 3:16 P.M.

13. **ART CLASS** Art class is 47 minutes long. During class, you spend 28 minutes drawing and the rest of the time painting. How much time do you spend painting? 19 minutes

14. **GAMES** You play a board game from 12:20 P.M. to 12:58 P.M. You stop and eat lunch. Then you play a video game from 1:26 P.M. to 2:18 P.M. How long do you play games in all? 90 minutes