

Key Concept and Vocabulary

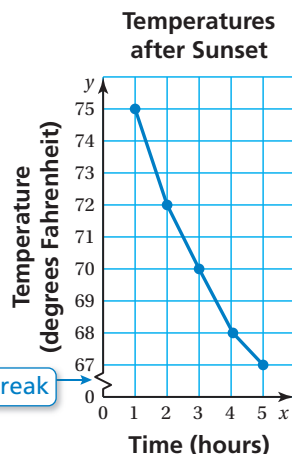
data
↓

Time (hours)	1	2	3	4	5
Temperature (degrees Fahrenheit)	75	72	70	68	67

ordered pairs →

(1, 75), (2, 72), (3, 70),
(4, 68), (5, 67)

axis break



Line graph

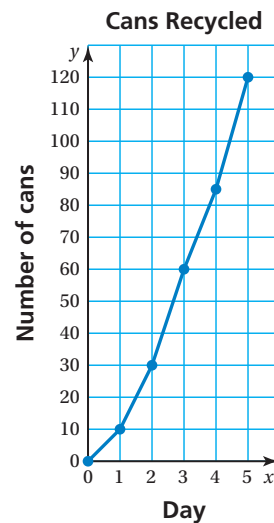


Skill Example

- The table shows the total number of cans your class recycles over 5 days. Make a line graph of the data. Between which two days does your class recycle the most cans? Explain.

Day	0	1	2	3	4	5
Number of cans	0	10	30	60	85	120

Your class recycles the most cans between Days 4 and 5. The greatest difference in the number of cans occurs between the points (4, 85) and (5, 120).



PRACTICE MAKES PURR-FECT®



Check your answers at BigIdeasMath.com.

- The table shows the total numbers of seashells you find during an hour at the beach. Make a line graph of the data.

Time (minutes)	10	20	30	40	50	60
Number of seashells	5	15	20	25	32	35

Between which two times did you find the most seashells? Explain.

Estimate how many seashells you had after 15 minutes.

